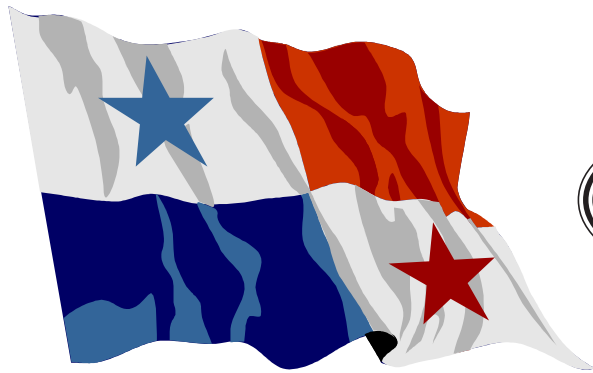


Legendary Journeys

AMERICA'S #1 VACATION SPECIALIST

PANAMA CANAL SUPER VALUE

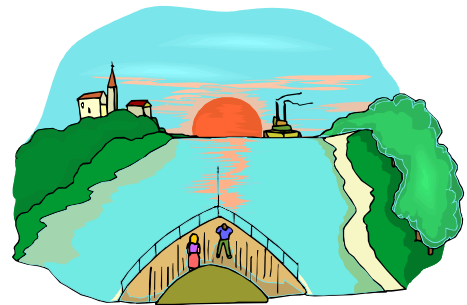
2012 - 2013



rates valid from
February 3, 2012



Ask us
about our
Travel
Clubs!



This brochure contains trips to the Panama Canal currently being offered by Legendary Journeys.

10 Florida Offices to serve you:

Ft. Myers ♦ Lakeland ♦ Largo ♦ Naples ♦ Ocala ♦ Port Charlotte ♦ Sarasota ♦ Sun City Center ♦ Venice ♦ Villages

Visit our website LJ.travel

1 - 800 - 511 - 5411

Legendary Journeys plans Escorted Tours, Cruises & Cruise Tours to all corners of the planet. Whether it is the South Pacific, Asia & the Orient, Europe or your own backyard of North America... no one provides more choices at a better value than Legendary Journeys.

Legendary Journeys contracts directly with hotels, attractions and cruise lines. This enables us to provide you with the absolute best values! Legendary Journeys provides you with knowledgeable & experienced Tour Managers, Quality Transportation and Sightseeing. We provide a million dollar liability bond assuring your travel investment is protected!

Legendary Journeys is the most respected name in Escorted Cruises, Motorcoach Tours, Jet Tours and Cruise Tours. This SUPER VALUE BOOK has been prepared as a synopsis of travel programs that are available to you. All prices in this brochure are current at the time of printing and are subject to change without notice. Please visit our website where you can download the current detailed brochures.

As always, Legendary Journeys thanks you for your loyal support and we hope to show you a Legendary Journey soon.

CONTENTS

1. Legendary Journeys Packaged Cruises, Cruise Tours & Tours:
 - Advance Notice & Diamond Deals : many other special group flyers!
2. All 129 sailings to Panama Canal in order by departure
3. Legendary Journeys General Information Page

We want you to come and join the best Travel Club in Florida! Join Us Today!



We have more than 2000 happy Travel Club Members who enjoy the many rewards and benefits of our Travel Clubs. We provide the absolute best, Members Only day trips, multi-day coach trips, jet tours and WOW...THE CRUISES!

You have traveled with the rest, now travel with the BEST! You deserve it!

JOIN US TODAY!

Legendary Journeys Travel Club Members are the very first to receive information on any extraordinary offers and exclusive specials before they are release to the public. Many of our unique trips sell out very fast and as a Travel Club Member you can be the first to book these excellent deals. You will also receive invitations to monthly meetings and exclusive discounts not offered to non-club members.

And at the low price of \$15 per year, membership will pay for itself the first time you travel.

CALL US AT 800-511-5411 FOR THE OFFICE NEAREST TO BECOME A MEMBER.

MUST BE A TRAVEL CLUB MEMBER TO BOOK OUR DAY TRIPS!

LEGENDARY JOURNEYS Presents Our Exclusive



Diamond Deal



This special trip is offered EXCLUSIVELY in the United States by Legendary Journeys!

SPACE IS TOTALLY FIRST CALL, FIRST CONFIRMED...CALL 800-511-5411

Princess Cruises beautiful CORAL PRINCESS

Panama Canal 2-Day Canal Experience

Ft. Lauderdale to Los Angeles (or reverse)

2011: October 11, 24; November 8, 21 (THANKSGIVING); December 19 (CHRISTMAS & NEW YEARS); 2012: January 16; February 13, 28; March 12; April 9

FREE AIR ~ FREE Bus to the pier ~ Aruba ~ Cartagena, Columbia ~ 2 Day Panama Canal Experience ~ Panama City ~ Costa Rica ~ 2 Day Los Angeles Pre/Post Tour

16 DAYS JUST \$1149!

Features:

- 15 Day cruise on CORAL PRINCESS
- FREE Bus from/to select Florida cities & Ft. Lauderdale Pier or Private Home Pickup/Drop off for guests living in Broward & Dade County (FL)
- FREE Air from/to Select Florida cities to Los Angeles or your may take a \$150 No Air / No Transfers credit (Other cities on request from any gateway city)
- FREE 2 Day / 1 Night Los Angeles Pre/Post Tour including first class (3 star) hotel & transfers;
- **Rates include** Vendor & Cruise Line fees \$350. Rates are plus Government taxes from \$234.85 to \$265.84 depending on sailing date.

Ft Lauderdale to Los Angeles sailings: October 11, November 8, February 28. Los Angeles to Ft Lauderdale sailings: October 24, November 21, December 19, January 16, February 13, March 12, April 9

Call For Reservations TODAY As This FLASH Special is strictly FIRST CALL, FIRST CONFIRMED!

Legendary Journeys

800-511-5411 www.GoLJ.travel



Legendary Journeys DIAMOND DEAL specials are exclusive rates not available ANYWHERE BUT Legendary Journeys. Rates are based on minimum rates and include port charges. Government taxes and fuel surcharges are additional. (note fuel surcharge may be eliminated or refunded to you as a shipboard credit. Ask your agent for current details) Reservations require full payment at time of booking and are non refundable. Rates reflect the lowest category available. Higher categories are available for additional charge. All sailings dates may not be included in the lowest rate and may have small supplements. Please review Cruise Lines brochure for complete rules and client responsibilities.

CRUISE LINE:

SHIP NAME:

DEPARTURE:

DURATION:

START PORT

END PORT

PRICED FROM

ITINERARY:

Cunard	Queen Victoria	1/19/12	11 Night	Ft Lauderdale	Ft. Lauderdale	CHECK BACK	Westbound Cross Canal
Holland America	Statendam	1/20/12	14 Night	San Diego	Ft Lauderdale	CHECK BACK	Eastbound Cross Canal
Crystal	Symphony	1/27/12	10 Night	Costa Rica	Miami	\$3,590	Eastbound Cross Canal
Cunard	Queen Victoria	1/30/12	15 Night	Ft Lauderdale	Los Angeles	CHECK BACK	Westbound Cross Canal
Holland America	Statendam	2/3/12	14 Night	Ft Lauderdale	San Diego	CHECK BACK	Westbound Cross Canal
Holland America	Statendam	2/17/12	14 Night	San Diego	Ft Lauderdale	CHECK BACK	Eastbound Cross Canal
Princess	Coral	2/28/12	14 Night	Ft Lauderdale	Los Angeles	\$1,839	Westbound Cross Canal
Cunard	Queen Victoria	2/28/12	17 Night	Los Angeles	New York	\$3,048	Eastbound Cross Canal
Holland America	Statendam	3/2/12	14 Night	Ft Lauderdale	San Diego	\$2,199	Westbound Cross Canal
Celebrity	Infinity	3/11/12	15 Night	Valparaiso	Ft Lauderdale	\$1,449	Eastbound Cross Canal
Princess	Coral	3/13/12	14 Night	Los Angeles	Ft Lauderdale	\$1,299	Eastbound Cross Canal
Holland America	Statendam	3/16/12	14 Night	San Diego	Ft Lauderdale	\$1,789	Eastbound Cross Canal
Celebrity	Infinity	3/26/12	15 Night	Ft Lauderdale	San Diego	\$1,499	Westbound Cross Canal
Princess	Coral	3/27/12	14 Night	Ft Lauderdale	Los Angeles	\$1,199	Westbound Cross Canal
Holland America	Statendam	3/30/12	14 Night	Ft Lauderdale	San Diego	\$1,299	Westbound Cross Canal
Holland America	Rotterdam	4/3/12	14 Night	San Diego	Ft Lauderdale	\$1,599	Eastbound Cross Canal
Holland America	Zuiderdam	4/9/12	29 Night	Ft Lauderdale	San Diego	\$2,499	Westbound Cross Canal
Princess	Coral	4/10/12	14 Night	Los Angeles	Ft Lauderdale	\$1,199	Eastbound Cross Canal
Celebrity	Infinity	4/10/12	15 Night	San Diego	Ft Lauderdale	\$1,499	Eastbound Cross Canal
Holland America	Statendam	4/13/12	14 Night	San Diego	Ft Lauderdale	\$1,199	Eastbound Cross Canal
Regent	Navigator	4/14/12	17 Night	Ft Lauderdale	San Francisco	\$7,999	Westbound Cross Canal
Norwegian	Pearl	4/15/12	14 Night	Miami	Los Angeles	\$1,649	Westbound Cross Canal
Holland America	Zuiderdam	4/20/12	18 Night	Ft Lauderdale	San Diego	\$1,599	Westbound Cross Canal
Crystal	Serenity	4/21/12	17 Night	Los Angeles	New York	\$5,645	Eastbound Cross Canal
Princess	Coral	4/24/12	15 Night	Ft Lauderdale	Los Angeles	\$1,399	Westbound Cross Canal
Holland America	Westerdam	4/25/12	13 Night	Ft Lauderdale	San Diego	\$1,399	Westbound Cross Canal
Holland America	Westerdam	4/25/12	16 Night	Ft Lauderdale	Vancouver	\$1,499	Westbound Cross Canal
Celebrity	Infinity	4/25/12	16 Night	Ft Lauderdale	Seattle	\$1,499	Westbound Cross Canal
Holland America	Westerdam	4/25/12	17 Night	Ft Lauderdale	Seattle	\$1,599	Westbound Cross Canal
Princess	Island	4/27/12	14 Night	Ft Lauderdale	Los Angeles	\$1,399	Westbound Cross Canal
Holland America	Statendam	4/27/12	16 Night	Ft Lauderdale	Vancouver	\$1,499	Westbound Cross Canal
Holland America	Amsterdam	4/28/12	15 Night	Ft Lauderdale	San Diego	\$1,499	Westbound Cross Canal
Norwegian	Jewel	4/28/12	17 Night	New York	Los Angeles	\$1,499	Westbound Cross Canal
Holland America	Amsterdam	4/28/12	19 Night	Ft Lauderdale	Vancouver	\$1,699	Westbound Cross Canal
Holland America	Amsterdam	4/28/12	20 Night	Ft Lauderdale	Seattle	\$1,699	Westbound Cross Canal
Norwegian	Jewel	5/1/12	14 Night	Miami	Los Angeles	\$1,399	Westbound Cross Canal
Celebrity	Millennium	5/12/12	15 Night	Miami	San Diego	\$1,519	Westbound Cross Canal
Oceania	Regatta	5/24/12	18 Night	San Francisco	Miami	\$10,398	Eastbound Cross Canal
Regent	Navigator	9/3/12	21 Night	San Francisco	New York	\$9,099	Eastbound Cross Canal
Princess	Coral	9/20/12	14 Night	Los Angeles	Ft Lauderdale	\$1,599	Eastbound Cross Canal
Celebrity	Infinity	9/21/12	17 Night	Seattle	Ft Lauderdale	\$1,449	Eastbound Cross Canal
Celebrity	Millennium	9/22/12	15 Night	San Diego	Miami	\$1,349	Eastbound Cross Canal
Norwegian	Jewel	9/27/12	15 Night	Los Angeles	Miami	\$1,199	Eastbound Cross Canal
Holland America	Statendam	9/27/12	15 Night	San Diego	Ft Lauderdale	\$1,699	Eastbound Cross Canal
Norwegian	Pearl	9/28/12	14 Night	Los Angeles	Miami	\$1,099	Eastbound Cross Canal
Princess	Island	9/28/12	15 Night	San Francisco	Ft Lauderdale	\$1,749	Eastbound Cross Canal
Holland America	Zuiderdam	10/2/12	17 Night	San Francisco	Ft Lauderdale	\$1,899	Eastbound Cross Canal
Princess	Coral	10/4/12	10 Night	Ft Lauderdale	Ft Lauderdale	\$1,099	Westbound Cross Canal
Royal Caribbean	Vision	10/5/12	14 Night	Ft. Lauderdale	San Diego	\$1,099	Transcanal
Celebrity	Millennium	10/7/12	15 Night	Miami	San Diego	\$1,349	Westbound Cross Canal
Celebrity	Infinity	10/8/12	15 Night	Ft Lauderdale	San Diego	\$1,349	Westbound Cross Canal
Holland America	Statendam	10/12/12	16 Night	Ft Lauderdale	San Diego	\$1,699	Westbound Cross Canal
Princess	Coral	10/14/12	14 Night	Ft Lauderdale	Los Angeles	\$1,599	Westbound Cross Canal
Royal Caribbean	Vision	10/19/12	14 Night	San Diego	Ft. Lauderdale	\$1,149	Transcanal
Celebrity	Infinity	10/23/12	15 Night	San Diego	Ft Lauderdale	\$1,349	Eastbound Cross Canal
Holland America	Statendam	10/26/12	14 Night	San Diego	Ft Lauderdale	\$1,699	Eastbound Cross Canal
Princess	Coral	10/28/12	14 Night	Los Angeles	Ft Lauderdale	\$1,599	Eastbound Cross Canal
Crystal	Symphony	10/31/12	18 Night	New York	Los Angeles	\$6,220	Westbound Cross Canal
Holland America	Westerdam	11/3/12	15 Night	San Diego	Ft Lauderdale	\$1,699	Eastbound Cross Canal
Celebrity	Infinity	11/7/12	15 Night	Ft Lauderdale	San Diego	\$1,399	Westbound Cross Canal
Holland America	Statendam	11/9/12	16 Night	Ft Lauderdale	San Diego	\$1,699	Westbound Cross Canal

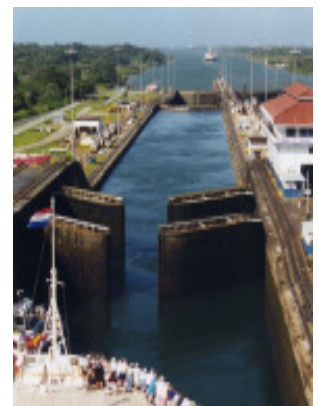
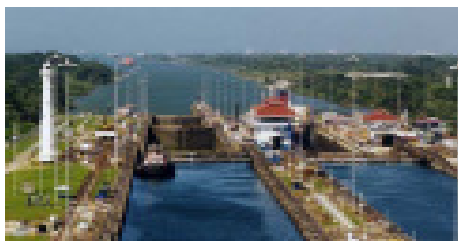
CRUISE LINE:	SHIP NAME:	DEPARTURE:	DURATION:	START PORT	END PORT	PRICED FROM	ITINERARY:
Princess	Coral	11/11/12	10 Night	Ft Lauderdale	Ft Lauderdale	\$1,099	Westbound Cross Canal
Princess	Island	11/12/12	14 Night	Ft Lauderdale	Los Angeles	\$1,599	Westbound Cross Canal
Princess	Coral	11/21/12	10 Night	Ft Lauderdale	Ft Lauderdale	\$1,099	Westbound Cross Canal
Celebrity	Infinity	11/22/12	15 Night	San Diego	Ft Lauderdale	\$1,299	Eastbound Cross Canal
Princess	Island	11/26/12	14 Night	Los Angeles	Ft Lauderdale	\$1,599	Eastbound Cross Canal
Oceania	Regatta	11/27/12	23 Night	Miami	Los Angeles	\$15,196	Westbound Cross Canal
Princess	Coral	12/1/12	14 Night	Ft Lauderdale	Los Angeles	\$1,599	Westbound Cross Canal
Celebrity	Century	12/4/12	15 Night	San Diego	Fort Lauderdale	\$1,249	Eastbound Cross Canal
Oceania	Regatta	12/4/12	16 Night	Miami	Los Angeles	\$2,599	Westbound Cross Canal
Holland America	Amsterdam	12/5/12	17 Night	San Diego	Ft. Lauderdale	\$1,799	Eastbound Cross Canal
Celebrity	Infinity	12/7/12	15 Night	Ft Lauderdale	Valparaiso	\$1,149	Westbound Cross Canal
Princess	Coral	12/15/12	14 Night	Los Angeles	Ft Lauderdale	\$2,699	Eastbound Cross Canal
Celebrity	Century	12/19/12	15 Night	Ft Lauderdale	San Diego	\$1,899	Westbound Cross Canal
Oceania	Regatta	12/20/12	16 Night	Los Angeles	Miami	\$2,849	Eastbound Cross Canal
Holland America	Statendam	12/21/12	14 Night	San Diego	Ft Lauderdale	\$2,399	Eastbound Cross Canal
Celebrity	Century	1/3/13	15 Night	San Diego	Fort Lauderdale	\$1,399	Eastbound Cross Canal
Oceania	Regatta	1/5/13	18 Night	Miami	Callao	\$2,749	Westbound Cross Canal
Princess	Island	1/9/13	14 Night	Ft Lauderdale	Los Angeles	\$1,949	Westbound Cross Canal
Princess	Coral	1/15/13	10 Night	Ft Lauderdale	Ft Lauderdale	\$1,349	Westbound Cross Canal
Holland America	Statendam	1/18/13	14 Night	Ft Lauderdale	San Diego	\$1,799	Westbound Cross Canal
Celebrity	Century	1/18/13	15 Night	Ft Lauderdale	San Diego	\$1,399	Westbound Cross Canal
Cunard	Queen Victoria	1/18/13	16 Night	New York	San Francisco	CHECK BACK	Westbound Cross Canal
Cunard	Queen Elizabeth	1/20/13	15 Night	Ft Lauderdale	Los Angeles	\$2,295	Westbound Cross Canal
Cunard	Queen Victoria	1/21/13	13 night	Ft Lauderdale	San Francisco	CHECK BACK	Westbound Cross Canal
Princess	Island	1/23/13	14 Night	Los Angeles	Ft Lauderdale	\$1,949	Eastbound Cross Canal
Princess	Coral	2/7/13	14 Night	Ft Lauderdale	Los Angeles	\$1,949	Westbound Cross Canal
Princess	Island	2/16/13	10 Night	Ft Lauderdale	Ft Lauderdale	\$1,449	Westbound Cross Canal
Princess	Coral	2/21/13	14 Night	Los Angeles	Ft Lauderdale	\$2,099	Eastbound Cross Canal
Princess	Island	2/26/13	10 Night	Ft Lauderdale	Ft Lauderdale	\$1,449	Westbound Cross Canal
Holland America	Statendam	3/1/13	14 Night	San Diego	Ft Lauderdale	\$1,799	Eastbound Cross Canal
Princess	Coral	3/7/13	10 Night	Ft Lauderdale	Ft Lauderdale	\$1,449	Westbound Cross Canal
Princess	Island	3/8/13	14 Night	Ft Lauderdale	Los Angeles	\$2,099	Westbound Cross Canal
Cunard	Queen Elizabeth	3/12/13	18 Night	Los Angeles	New York	\$2,895	Eastbound Cross Canal
Holland America	Statendam	3/15/13	14 Night	Ft Lauderdale	San Diego	\$1,799	Westbound Cross Canal
Princess	Coral	3/17/13	10 Night	Ft Lauderdale	Ft Lauderdale	\$1,449	Westbound Cross Canal
Celebrity	Infinity	3/17/13	15 Night	Valparaiso	Ft Lauderdale	\$1,599	Eastbound Cross Canal
Holland America	Westerdam	3/17/13	20 Night	Ft Lauderdale	San Diego	\$2,299	Westbound Cross Canal
Royal Caribbean	Vision	3/18/13	15 Night	Ft. Lauderdale	San Diego	\$1,299	Transcanal
Princess	Island	3/22/13	14 Night	Los Angeles	Ft Lauderdale	\$2,099	Eastbound Cross Canal
Princess	Coral	3/27/13	10 Night	Ft Lauderdale	Ft Lauderdale	\$1,449	Westbound Cross Canal
Holland America	Statendam	3/29/13	14 Night	San Diego	Ft Lauderdale	\$1,799	Eastbound Cross Canal
Celebrity	Infinity	4/1/13	15 Night	Ft Lauderdale	San Diego	\$1,549	Westbound Cross Canal
Royal Caribbean	Vision	4/2/13	15 Night	Ft. Lauderdale	San Diego	\$1,299	Transcanal
Princess	Island	4/5/13	10 Night	Ft Lauderdale	Ft Lauderdale	\$1,449	Westbound Cross Canal
Princess	Coral	4/6/13	14 Night	Ft Lauderdale	Los Angeles	\$2,099	Westbound Cross Canal
Holland America	Statendam	4/12/13	19 Night	Ft Lauderdale	San Diego	\$2,199	Westbound Cross Canal
Princess	Island	4/15/13	10 Night	Ft Lauderdale	Ft Lauderdale	\$1,449	Westbound Cross Canal
Celebrity	Infinity	4/16/13	15 Night	San Diego	Ft Lauderdale	\$1,499	Eastbound Cross Canal
Holland America	Zuiderdam	4/19/13	18 Night	Ft Lauderdale	San Diego	\$2,099	Westbound Cross Canal
Holland America	Zuiderdam	4/19/13	22 Night	Ft Lauderdale	Vancouver	\$2,399	Westbound Cross Canal
Princess	Coral	4/20/13	14 Night	Los Angeles	Ft Lauderdale	\$2,099	Eastbound Cross Canal
Norwegian	Jewel	4/21/13	14 Night	Miami	Los Angeles	\$1,229	Westbound Cross Canal
Norwegian	Sun	4/21/13	15 Night	Miami	Los Angeles	\$1,099	Westbound Cross Canal
Norwegian	Sun	4/21/13	15 Night	Miami	Los Angeles	\$1,099	Westbound Cross Canal
Norwegian	Pearl	4/21/13	17 Night	New York	Los Angeles	\$1,199	Westbound Cross Canal
Regent	Navigator	4/22/13	18 night	Miami	San Francisco	\$7,799	Westbound Cross Canal
Princess	Island	4/25/13	15 Night	Ft Lauderdale	Los Angeles	\$2,299	Westbound Cross Canal
Holland America	Amsterdam	5/1/13	15 Night	Ft Lauderdale	San Diego	\$1,699	Westbound Cross Canal
Holland America	Amsterdam	5/1/13	20 Night	Ft Lauderdale	Vancouver	\$1,999	Westbound Cross Canal
Princess	Coral	5/4/13	15 Night	Ft Lauderdale	Los Angeles	\$2,299	Westbound Cross Canal
Crystal	Symphony	5/6/13	17 Night	Los Angeles	New York	\$6,195	Eastbound Cross Canal

CRUISE LINE:	SHIP NAME:	DEPARTURE:	DURATION:	START PORT	END PORT	PRICED FROM	ITINERARY:
Norwegian	Jewel	9/27/13	15 Night	Los Angeles	Miami	\$1,149	Eastbound Cross Canal
Norwegian	Pearl	10/4/13	14 Night	Los Angeles	Miami	\$1,099	Eastbound Cross Canal
Norwegian	Star	10/13/13	14 Night	Miami	Los Angeles	\$999	Westbound Cross Canal
Norwegian	Star	10/27/13	14 Night	Los Angeles	Miami	\$999	Eastbound Cross Canal
Norwegian	Star	11/10/13	14 Night	Miami	Los Angeles	\$999	Westbound Cross Canal
Norwegian	Star	11/24/13	14 Night	Los Angeles	Miami	\$1,049	Eastbound Cross Canal
Norwegian	Star	12/8/13	14 Night	Miami	Los Angeles	\$949	Westbound Cross Canal

Legendary Journeys

www.LJ.travel

800 - 511 - 5411



This brochure will be updated regularly so check back often!

Legendary Journeys, Inc.

General Information

DEPOSIT & FINAL PAYMENT: A per person deposit is due to confirm reservation. Fares do not include non commissionable fees, additional service charges or insurance payment. Departure Taxes, Visa's and the like are additional expenses paid by the passenger. Legendary Journeys will assist you in getting a VISA if tour requires. Full Payment is due 90 days prior to departure.

CANCELLATION POLICY: Loss of deposit for cancellation after booking. After Final Payment the penalties are as follows: 90 - 61 days prior - 50%; 60 - 31 days prior - 75%; within 30 days - non refundable. Percentages apply to the total cost of the tour. Diamond Deals are non-refundable. These are general cancellation fees, some of our promotions are non-refundable after booking, in which case please see specific notation on front of flyer.

PRICING: All prices in this brochure are current at the time of printing and are subject to change without notice.

REVISION FEES: Any changes made to a reservation after deposit is subject to a minimum \$35 Revision Fee per occurrence. Revision Fees (including Premium Air Fees and Choose Your Cabin) are non refundable and can not be insured.

CABIN ASSIGNMENTS: The cruise line will only assign a guarantee in the cabin category you purchase and the cabin assignment will come in your documents.

AIR DEVIATION: If your tour includes air, the flight schedules are for the scheduled arrival & departure days of the trip as indicated on the first page of the flyer. If you wish to travel on dates, other than what would be standard departure and return dates this must be requested at the time of reservation/deposit. There is a Premium Air fee of \$49 for this deviation as well as fare difference (if any). Any air purchased by Legendary Journeys is non-refundable after booking.

PRE TOURS, POST TOURS & UPGRADES: MUST be paid in FULL at the time of reservation.

DISCOUNTS: Any discounts/ coupons must be **pre-approved** by Legendary Journeys to be accepted on Legendary Journeys group programs. Many coupons offered by cruise lines and other suppliers specifically exclude applying acceptance to group travel. Because our group departures are highly discounted each coupon or discount must be reviewed by Legendary Journeys to determine if they can be applied. A service fee may be applied to the acceptance of discount coupon and that amount will be deducted from the coupon value. Additionally, all discounts and coupons apply to the first and second passenger ONLY traveling in a cabin/room.

DOCUMENTS: You will receive your documents approximately 7 days prior to departure. Passengers requesting documents be shipped to a Canadian address will be charged a \$75 handling fee. Documents shipped to any other country outside the United States will be charged a \$100 handling fee.

BAGGAGE ALLOWANCE: Regardless of the length of the trip you are allowed one checked bag and one carry-on per person. Carry-on Bag, should not exceed the dimensions of 12"x11"x6" and checked bag should not exceed the dimensions 30"x21"x11" and weight not exceeding 50 lbs.

WE HIGHLY RECOMMEND MEDICAL CANCELLATION/INTERRUPTION INSURANCE.

TIPPING: Legendary Journeys does not pay gratuities to your Tour Manager or Driver. We recommend you tip for good service based on the following industry standards: Overnight Tours: Tour Manager \$3 Per Person Per Day, Driver \$2 Per Person Per Day; Day Trips: Tour Manager \$2 Per Person Per Day, Driver \$1 Per Person Per Day. Cruise tipping as per ship guidelines.

PROOF OF CITIZENSHIP: Cruises and Tours that leave the Continental United States will require PROOF OF CITIZENSHIP. For Cruises & Tours this means a passport. You MUST check with U.S. Customs (for Americans or your Foreign Consulate office if you are not a U.S. citizen) to ensure proper documentation. U.S. rules for re-entering the United States are evolving and may require a passport. This is your only notice about providing proof of citizenship and passport. Legendary Journeys will not be responsible for your proper identification.

RESPONSIBILITY: The responsibility of Legendary Journeys is strictly limited. As the operator we sell the services of hotels, restaurants, attractions, cruises, etc. The operator is not responsible for any intentional or unintentional actions or omissions by suppliers. Legendary Journeys reserves the right to substitute any services of similar or equal quality. Legendary Journeys cannot control the circumstances, causes, effects, weather, strikes, bankruptcies, etc. of our suppliers. It is absolutely clear to your acceptance of participation in this trip that Legendary Journeys cannot guarantee airlines, flight times, hotels, attractions, shows, restaurants, Motorcoach vendors, etc. and unforeseen changes that might occur in the future. Therefore, Legendary Journeys, acting as intermediary or as an agent for these suppliers retains its rights to modify the itinerary components of the itinerary or the use of suppliers that is best for the operation of the tour. Furthermore, your claims about these unforeseen changes has in no way an effect on your decision to cancel or in waiving cancellation penalties that will be imposed as a result of your cancellation. Additionally, all requests (such as flight seating, hotel room types, etc.) are requests that cannot be guaranteed and your participation in the tour in no way assumes that you have been given any guarantees. Legendary Journeys is registered with the State of Florida as a Seller of Travel, registration no. ST29220.

C: 2/3/12



AMERICA'S #1 VACATION SPECIALIST



New Specials Added Daily at LJ.travel ~ Contact us at 1 - 800 - 511 - 5411

Main Office:	Tallywood Plaza 3474 17th Street	Sarasota, FL 34235	(941) 953-7988
Ft. Myers:	1500 Colonial Blvd. Unit 223	Ft. Myers, FL 33907	(239) 433-9200
Lakeland:	120 E. Pine St. # 8 Yarnell Bldg	Lakeland, FL 33801	(863) 904-0219
Largo:	801 West Bay Drive Suite 500	Largo, FL 33770	(727) 559-7200
Naples:	2335 N. Tamiami Trail # 402	Naples, FL 34103	(239) 417-8400
Ocala:	Jasmine Plaza 6130A SW Hwy 200	Ocala, FL 34476	(352) 291-9300
Port Charlotte:	Omni Executive Center 4055 Tamiami Trail A-5	Port Charlotte, FL 33952	(941) 743-3600
Sun City Center:	Cypress Village Plaza 3818 Sun City Center Blvd	SCC, FL 33573	(813) 633-4521
The Villages:	15561 S. US Hwy 441	Summerfield, FL 34491	(352) 751-0022
Venice:	303 Tamiami Trail South Unit C	Nokomis, FL 34275	(941) 484-7030